

Figure 4.8

Mitigated Maximum Hourly TSP Concentration at 1.5m above ground  
(Scenario 1 - Active Works Areas Shift to South)

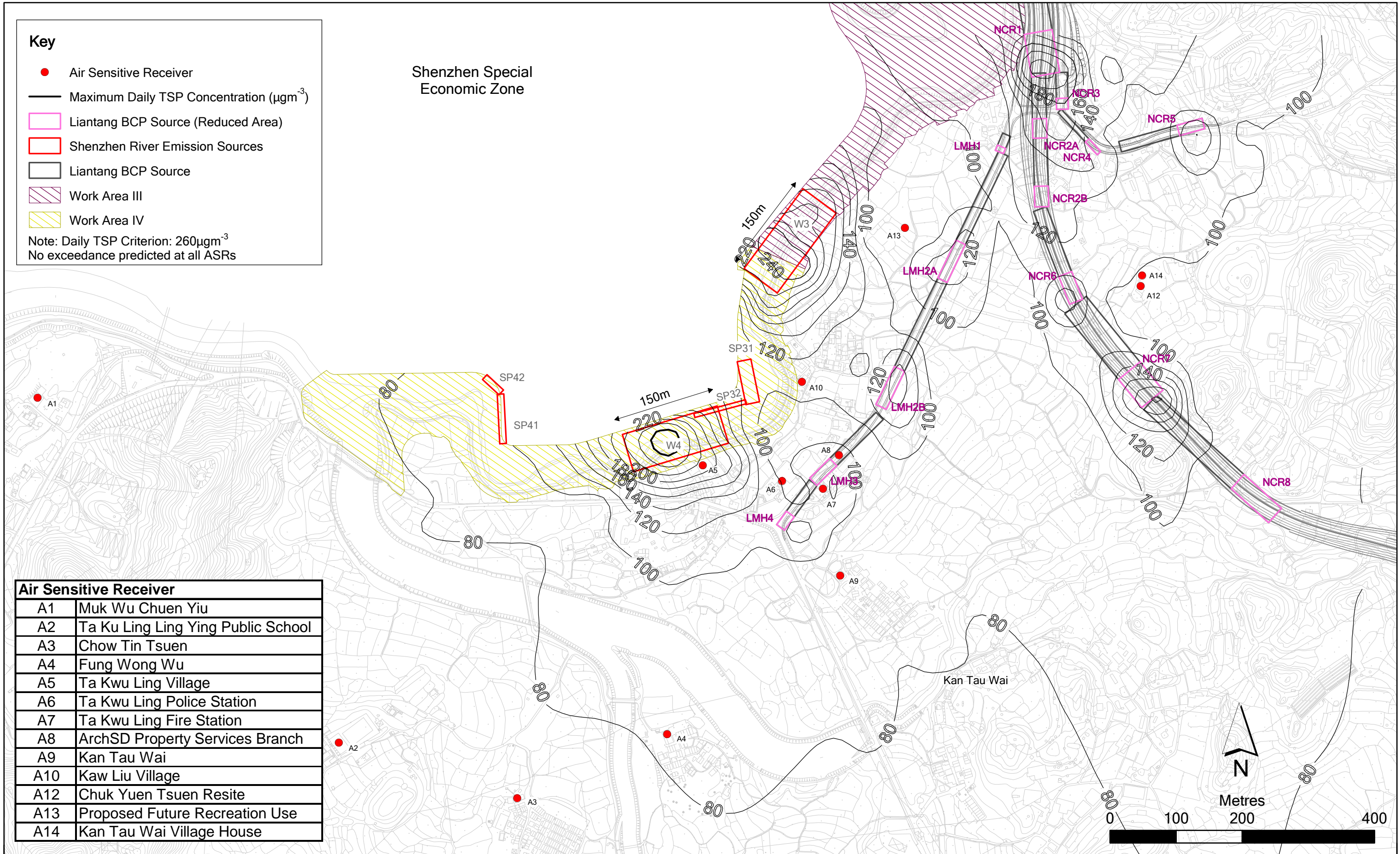


**Key**

- Air Sensitive Receiver
- Maximum Daily TSP Concentration ( $\mu\text{g}\text{m}^{-3}$ )
- Liantang BCP Source (Reduced Area)
- Shenzhen River Emission Sources
- Liantang BCP Source
- Work Area III
- Work Area IV

Note: Daily TSP Criterion:  $260\mu\text{g}\text{m}^{-3}$   
No exceedance predicted at all ASRs

**Shenzhen Special Economic Zone**



Air Sensitive Receiver	
A1	Muk Wu Chuen Yiu
A2	Ta Ku Ling Ling Ying Public School
A3	Chow Tin Tsuen
A4	Fung Wong Wu
A5	Ta Kwu Ling Village
A6	Ta Kwu Ling Police Station
A7	Ta Kwu Ling Fire Station
A8	ArchSD Property Services Branch
A9	Kan Tau Wai
A10	Kaw Liu Village
A12	Chuk Yuen Tsuen Resite
A13	Proposed Future Recreation Use
A14	Kan Tau Wai Village House

Figure 4.9

Mitigated Maximum Daily TSP Concentration at 1.5m above ground  
(Scenario 1 - Active Works Areas Shift to South)

File: Final\0101759\_dust09\_southdaily.mxd  
Date: 29/11/2010



**Key**

- Air Sensitive Receiver
  - Maximum Hourly TSP Concentration ( $\mu\text{g}\text{m}^{-3}$ )
  - Liantang BCP Source (Reduced Area)
  - Shenzhen River Emission Sources
  - Liantang BCP Source
  - Work Area I
  - Work Area II
  - Work Area III
- Note: Hourly TSP Criterion:  $500\mu\text{g}\text{m}^{-3}$   
No exceedance predicted at A11

**Air Sensitive Receiver**

A11	Tsung Yuen Ha
-----	---------------

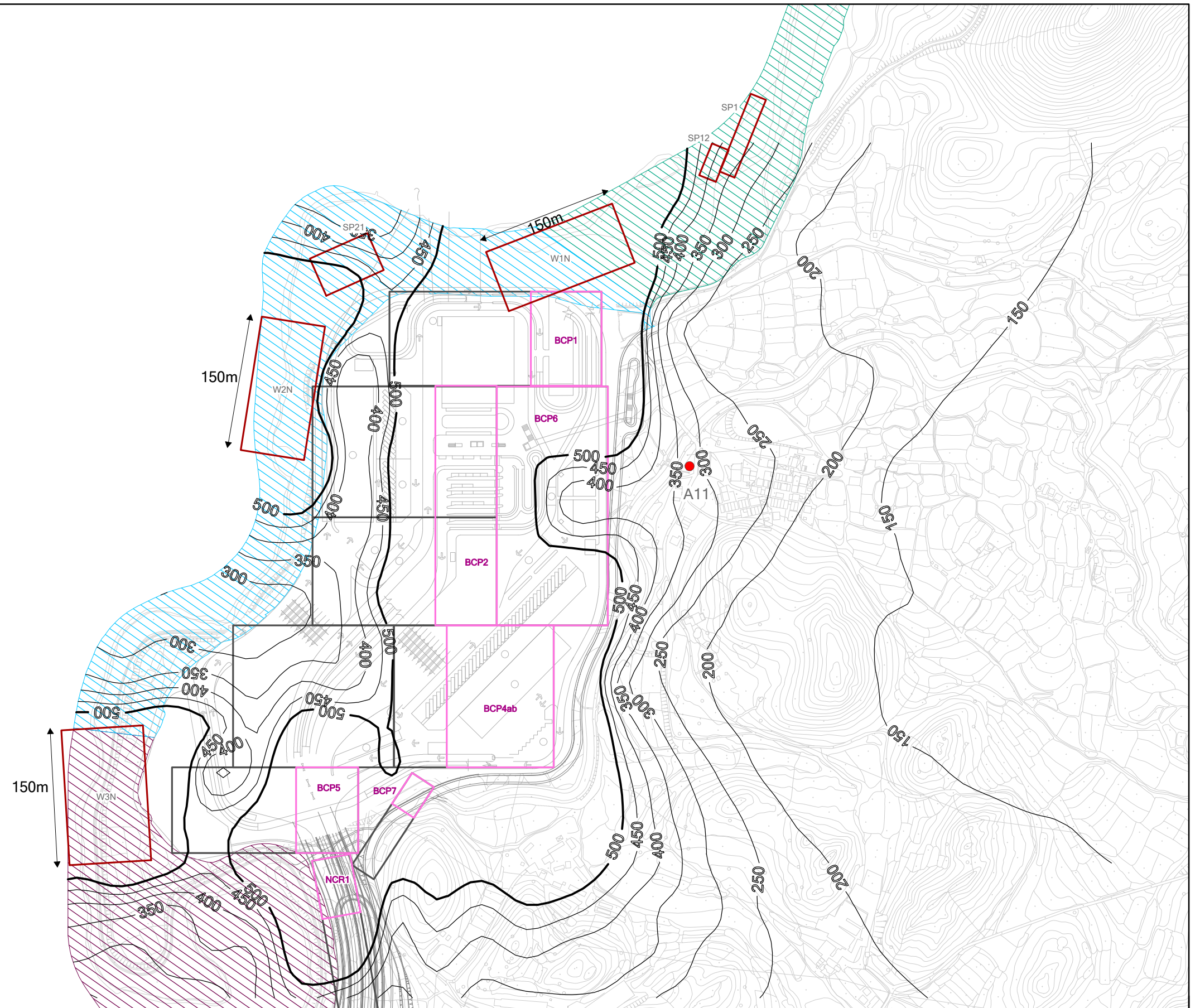


Figure 4.10 Mitigated Maximum Hourly TSP Concentration at 1.5m above ground (Scenario 2 - Active Works Areas Shift to North)

File: Final\0101759\_dust09\_northhourly.mxd  
Date: 30/11/2010



**Key**

- Air Sensitive Receiver
- Maximum Daily TSP Concentration ( $\mu\text{g}\text{m}^{-3}$ )
- Liantang BCP Source (Reduced Area)
- Shenzhen River Emission Sources
- Liantang BCP Source
- Work Area I
- Work Area II
- Work Area III

Note: Daily TSP Criterion:  $260\mu\text{g}\text{m}^{-3}$   
No exceedance predicted at A11

**Air Sensitive Receiver**

A11	Tsung Yuen Ha
-----	---------------

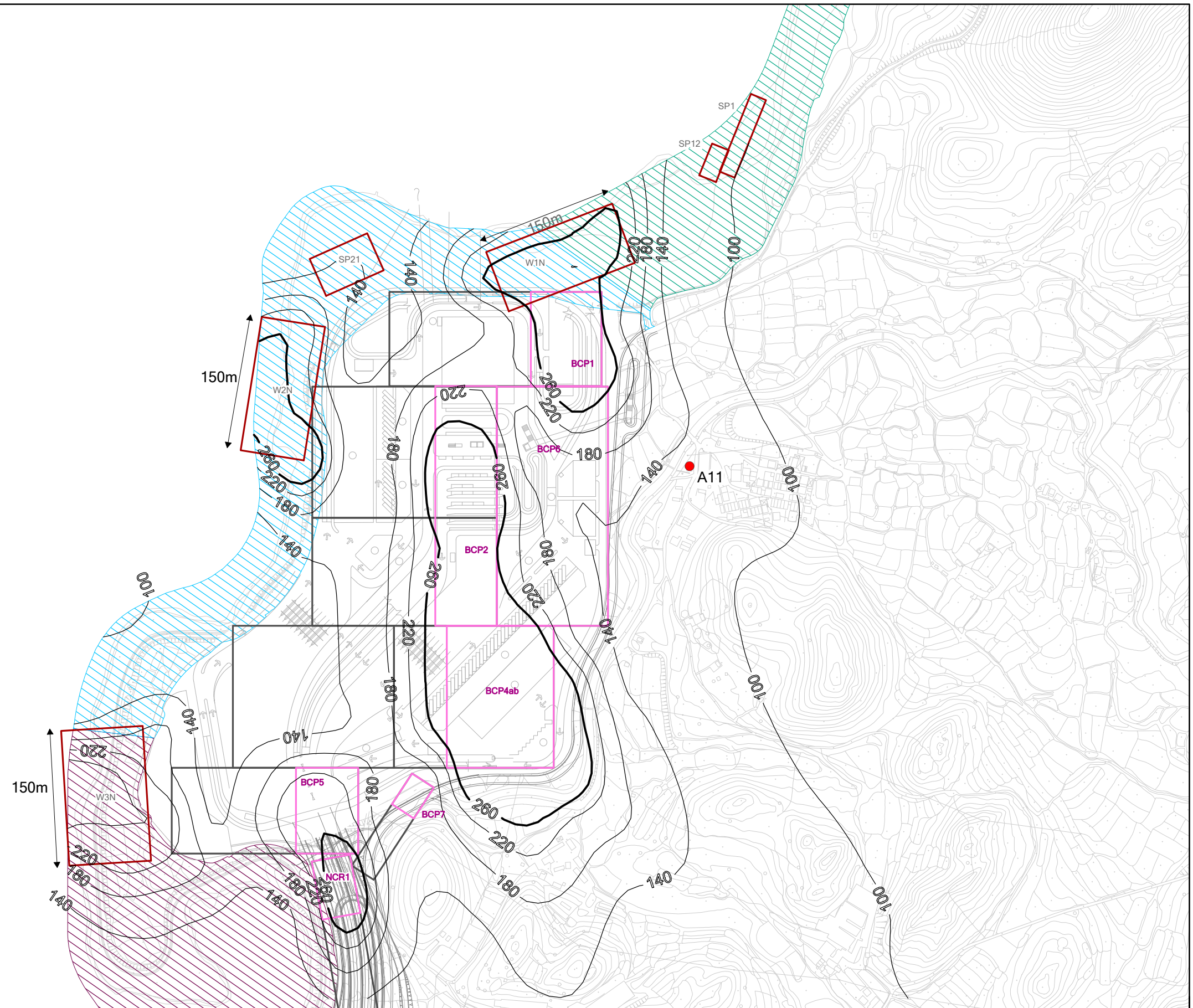


Figure 4.11

Mitigated Maximum Daily TSP Concentration at 1.5m above ground  
(Scenario 2 - Active Works Areas Shift to North)



**Key**

- Annual Average TSP Concentration ( $\mu\text{g}\text{m}^{-3}$ )
- Air Sensitive Receiver
- BCP Emission Sources
- Shenzhen River Emission Sources
- ▨ Project site

Note: Annual TSP Criterion:  $80\mu\text{g}\text{m}^{-3}$   
 No exceedance predicted at all ASRs

**Air Sensitive Receiver**

A1	Muk Wu Chuen Yiu
A2	Ta Ku Ling Ling Ying Public School
A3	Chow Tin Tsuen
A4	Fung Wong Wu
A5	Ta Kwu Ling Village
A6	Ta Kwu Ling Police Station
A7	Ta Kwu Ling Fire Station
A8	ArchSD Property Services Branch
A9	Kan Tau Wai
A10	Kaw Liu Village
A11	Tsung Yuen Ha
A12	Chuk Yuen Tsuen Resite
A13	Proposed Future Recreation Use
A14	Kan Tau Wai Village House

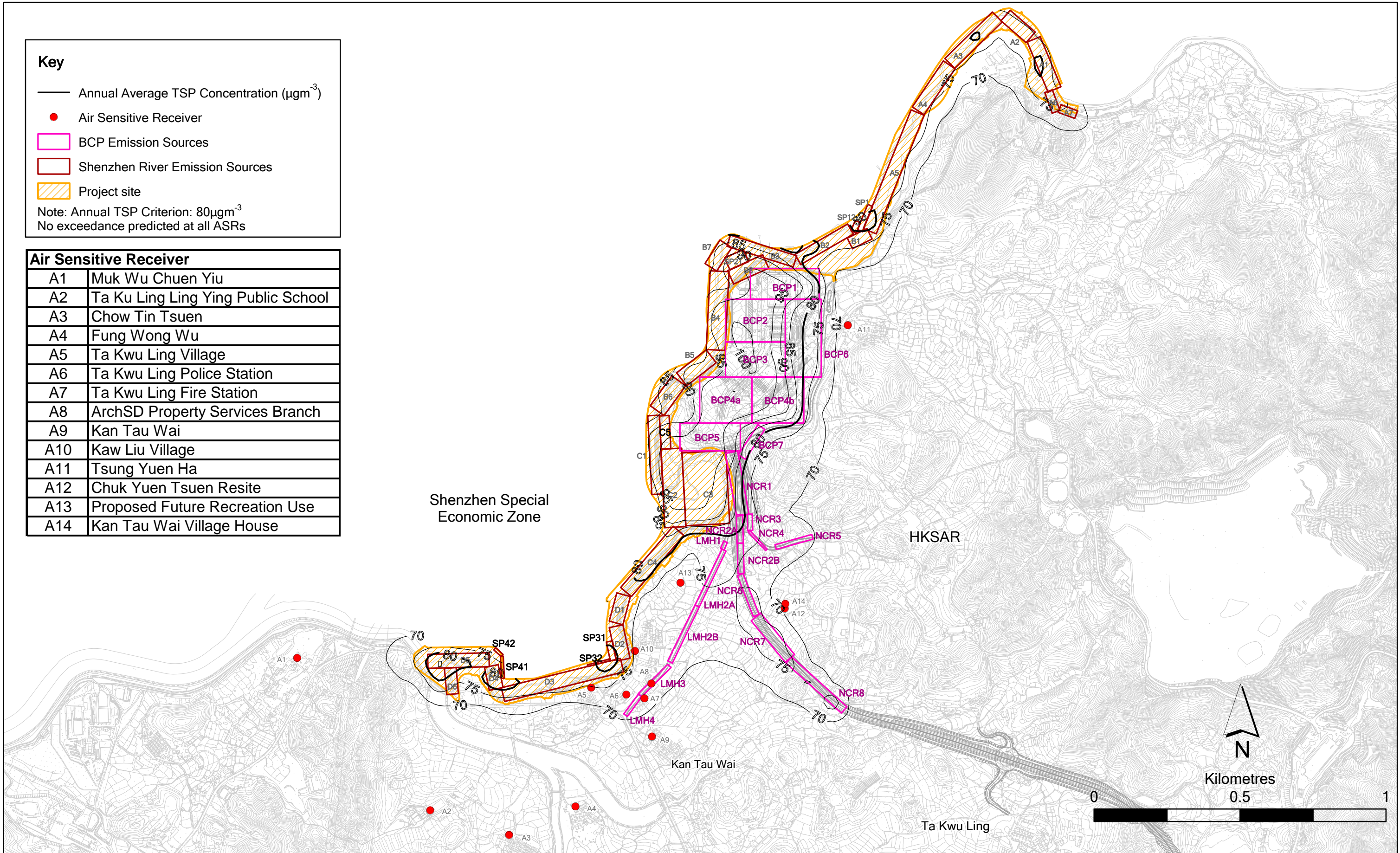


Figure 4.12

Annual Average TSP Concentration at 1.5m above ground